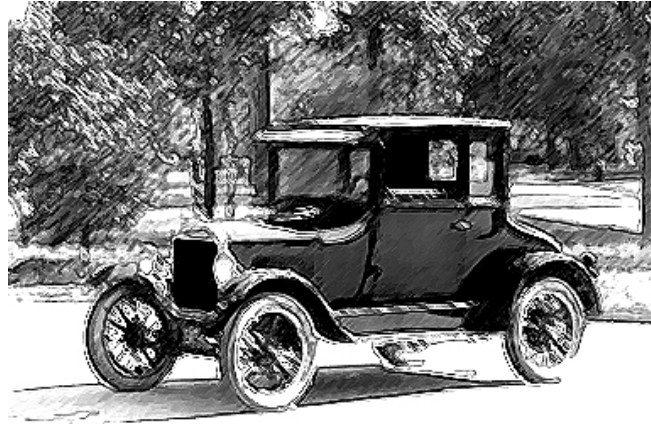


GEOG 441: *Transportation Geography and Planning*
Winter 2012

Tuesday and Thursday, 3:30-4:45

Room 201 Strong Hall

Instructor: Norman Tyler



Course Content:

The objective of this course is to have students become familiar with issues of transportation planning and travel. The course will consist of classroom presentations, readings, and exercises relating to the course subject.

Topics are divided into three sections, and include:

Part I: History of transportation in the U.S.

Part II: Airlines and airports

Part III: Transportation planning

Transportation Geography and Planning is appropriate for any student interested in transportation issues in the U.S. It is not necessary to have had previous courses in the topic area. The text will be a course pack consisting of the instructor's writings on the history of transportation. Laptops can be used in class only for class-related work.

Grading will be based on tests of Part I and II of the course (20% each), a final exam focusing on Part III (25%), and a series of take-home exercises throughout the semester (35%). Students taking the course for graduate credit will need a form signed by the instructor; they will be assigned an additional project.

Office hours:

Room 209 Strong

Monday and Wednesday: 1:00–2:00; 4:45–5:30

Tuesday and Thursday: 1:45–3:00

... or by appointment

Email: ntyler@emich.edu