

Carriage House, 2002

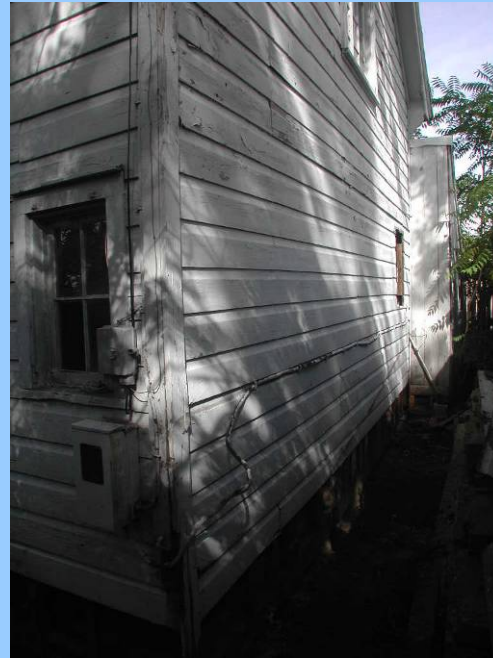








Difficult site, very little room between the building and the property line.



Inkling of a problem lurking behind wire mesh, green mold, and snow.

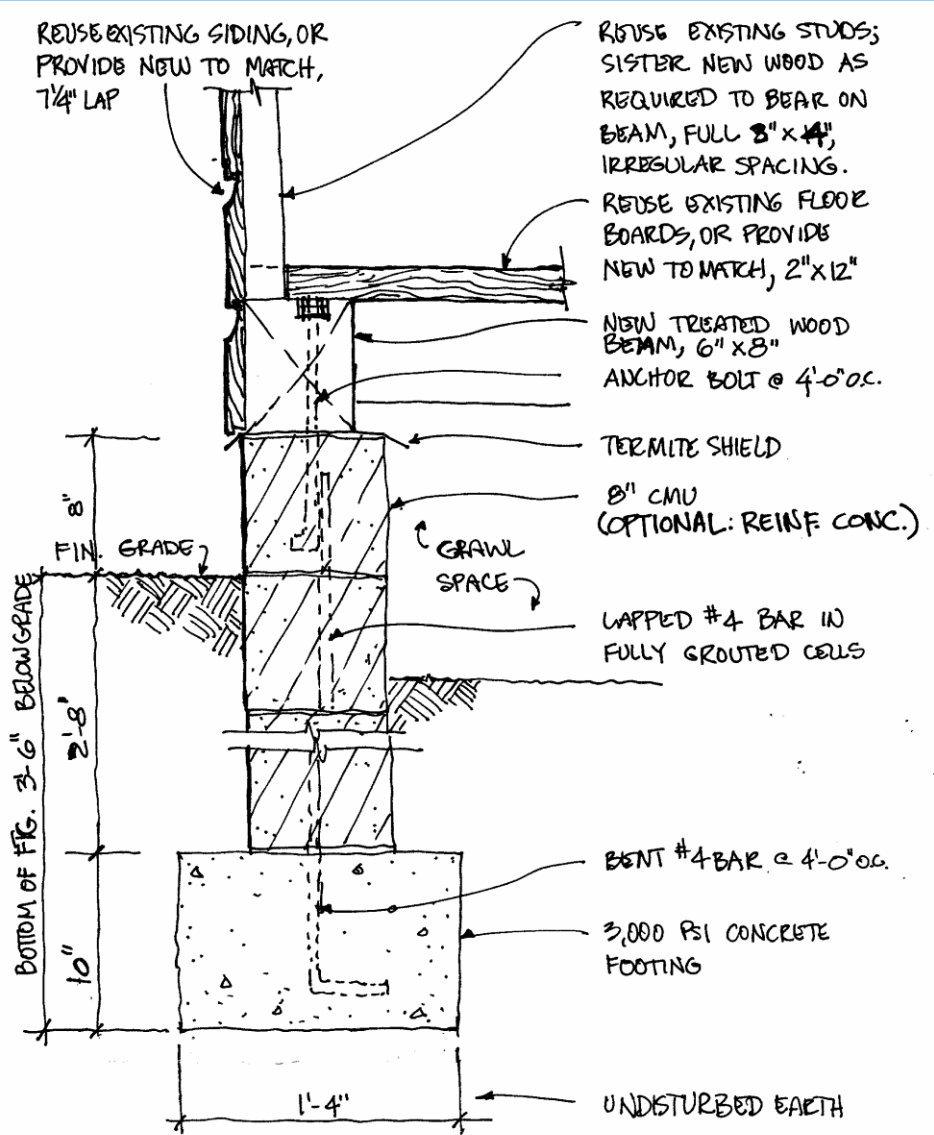


Kick off a couple boards and, yes, the problem is obvious.





Sketched building section required for building permit









← Shore up the 2nd floor



← Shore up the 2nd floor

Use line level to set needle beams





← Shore up the 2nd floor

Use line level to set needle beams

Bolt needle beams to studs





← Shore up the 2nd floor

Use line level to set needle beams

Bolt needle beams to studs

Level needle beams with jacks







Old termite trails are hard to see



Old termite trails are hard to see



Old termite trails are hard to see









Insect damage
is hard to detect
on the surface...

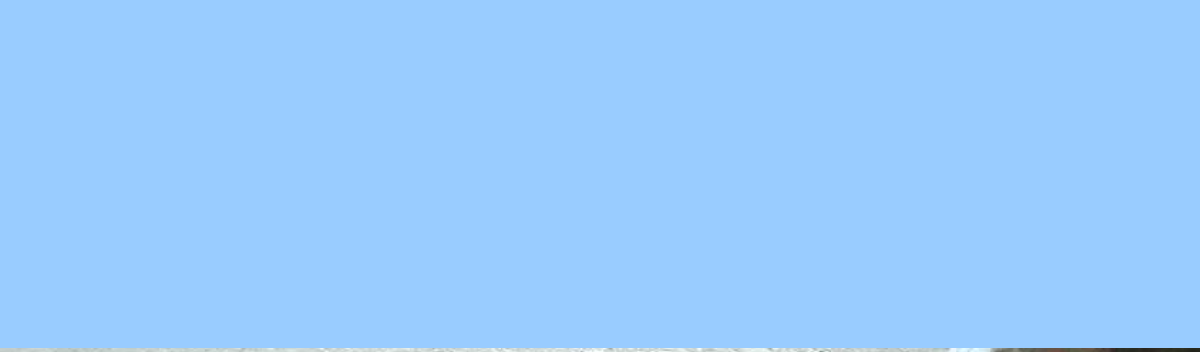














Archeology...





Foundation for a previous building extends beyond



Foundation for a previous building extends beyond

Lime found in trench









55
Guidobono
Concrete, Inc.
BRIGHTON, MI
18101 229-2666
BLOCKS • TOOLS • SUPPLIES

55
GUIDOBONO
CONCRETE, INC.
BRIGHTON, MI
229-2666





ATTN
PARKING
CUSTO
7:30
TOWED

























Anchoring the corners









It's all going to the landfill...





New floor –
beams, joists,
and floor boards
– approximately
matches the
original design.





Moved back in, but not done yet...



...but the story continues,
outside



...but the story continues, and upstairs



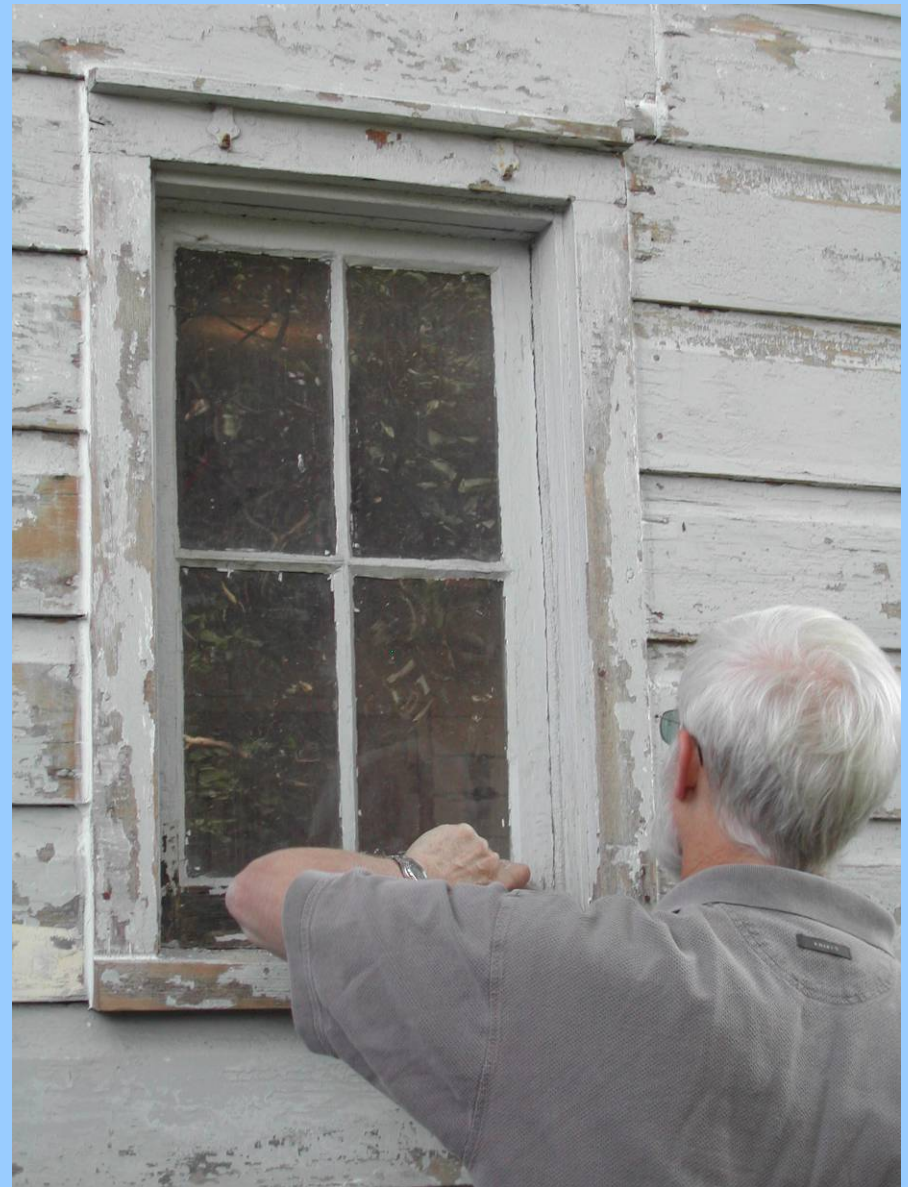
Steve says: "I'll attach these cables to square up the building."
They're still there, one year later, and I wonder what will happen if/when they're removed...

Finished, it's efficient and packed with...

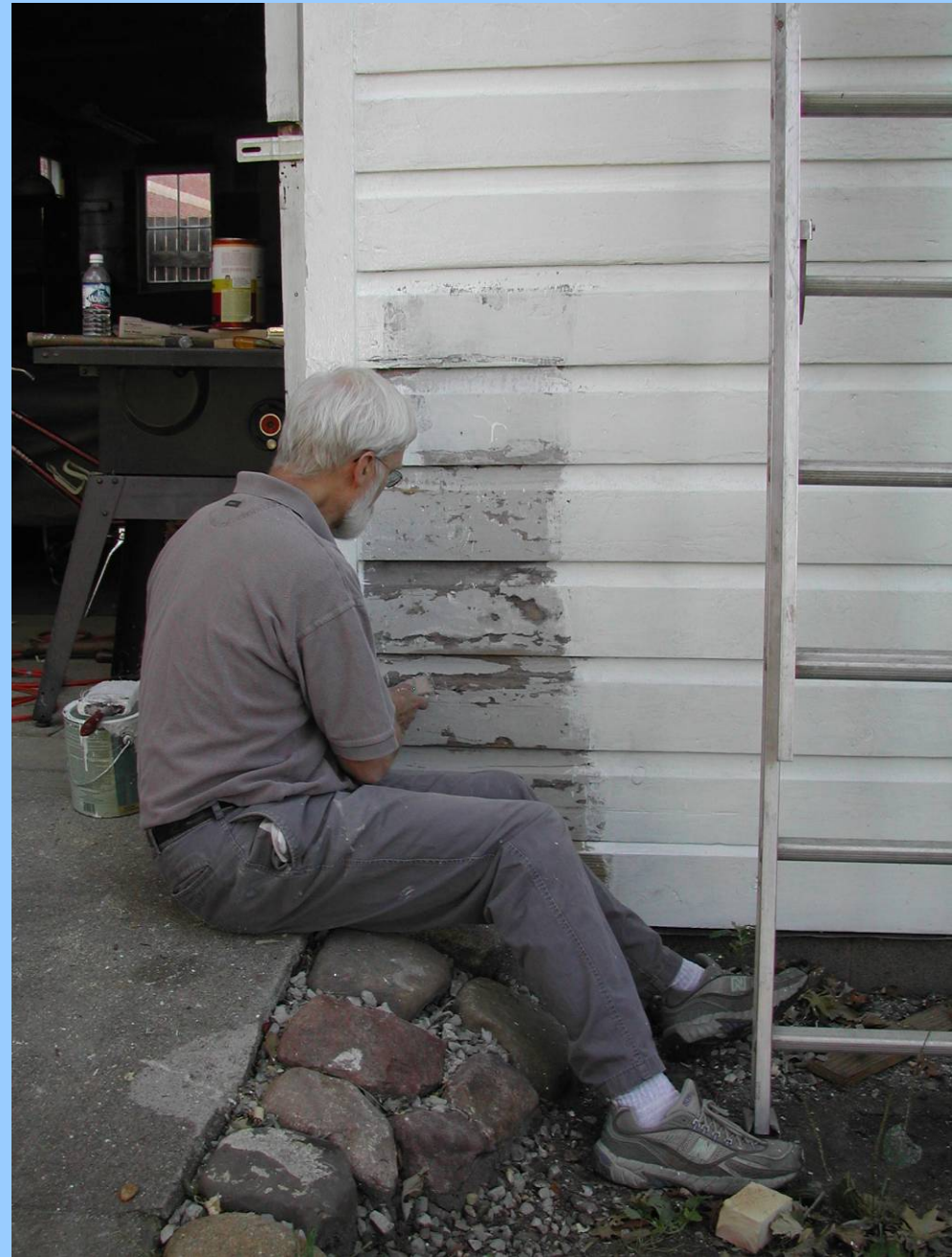


...our next project.

Meanwhile, the guys prep for painting.



Scrape and prime.



Trim repair and finish paint.



Two-color paint scheme.



Updated electrical



All done, until the next project...

